

TRAINING COURSES

ERM Provides a variety of training courses both internally and externally, at regular intervals throughout the year. The company provides a wide range of courses which come under the main topics of Earthing Design and Measurement, Lightning Protection Design, Risk Assessment and CDEGS software training.

Please see the list of courses that ERM delivers below. If these do not meet your needs or you require training at a specific location, ERM is able to put together a bespoke course to meet your requirements. Please email info@earthingrisk.co.uk for more information.



EARTHING COMPETENCY TRAINING (ECT)

This is a one-day course that will provide a basic understanding of earthing and the hazards associated with earth testing on live sites. The course is in four parts which cover the following topics:

- General Awareness of Earthing Issues
- Third Party Hazards
- Risk Assessment
- Testing
- Standards & Design

The course is designed to ensure that participants gain a basic knowledge and understanding of earthing which they can apply to their working practises. On completion of this course, ERM will provide a certificate valid for 3 years.

LIGHTNING PROTECTION TRAINING

This course will cover the basics of lightning protection, design, surge protection, assessment of existing systems and risk assessment strategies.

All content is in line with BS EN 62305. The course can be delivered at either ERM's training facility or at a location of the client's choice.

SITE MEASUREMENT TRAINING

ERM provide earthing measurement training based on industry standard methodologies. ERM can provide a versatile range of training suited to the client's needs. The courses can be delivered at either ERM's training facility, at offices, or at a location of the client's choice.

Common course material includes:

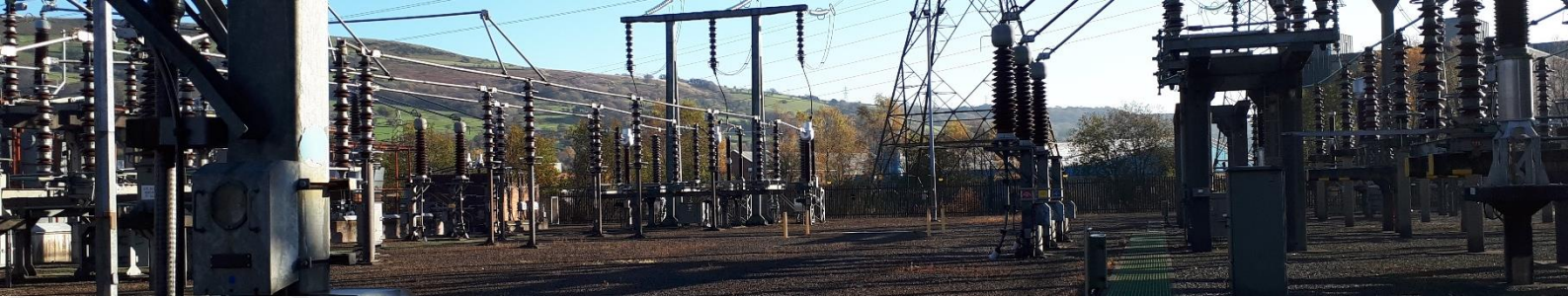
- Earth Resistance Measurements
- Soil Resistivity Measurements
- Clamp Meter & Continuity Testing Training
- Electrode Location Work

All content can be tailored to meet the client's requirements.



EXTERNAL TRAINING COURSES

ERM works closely with both EA Technology & SES Technologies to provide a variety of high quality training courses. These are listed below with links to the courses for further details and information.



EA TECHNOLOGY – LIGHTNING PROTECTION FOR MOD SITES WITH EXPLOSIVE FACILITIES

This course will give you a comprehensive overview of lightning protection for Ministry of Defence sites that contain explosives facilities. The course explains the lightning protection and earthing requirements of Joint Services Publication JSP482, and gives examples of how to protect explosive facilities to the British Standard BS EN 62305.

You will gain an understanding of the design, maintenance and compliance testing of MOD lightning protection systems, with particular reference to buildings containing explosives, illustrated with Case Studies of both good and bad practise.

The course includes a lightning protection workshop in which you will be able to discuss your own projects and problems with the presenters and your fellow delegates. Please see [here](#) for the course.

ERM & EA TECHNOLOGY – UNDERSTANDING LIGHTNING PROTECTION

Lightning can have a devastating effect on power supply assets, damaging buildings, power structures, communications and other essential equipment. This damage can be easily and cost effectively avoided.

The course covers everything from the basics of lightning and its effects, to the use of risk assessment in the form of protection strategies. It will not only provide you with a clear understanding of the threat from lightning and the protection options available, but also introduce you to the economics involved in protection system selection. Please see [here](#) for the course.

ERM & EA TECHNOLOGY – SUBSTATION EARTHING

This intensive, three-day course will give you a thorough insight into all aspects of substation earthing for low, medium and high voltage systems (distribution and transmission), to ensure safety, protection and regulatory compliance.

The comprehensive programme includes technical sessions on earthing design and specifications, current standards and regulations, earth grids, soil resistivity, conductors, earth rods and GIS. And includes a practical earthing measurement exercise and subsequent data analysis. The speakers have been selected for their extensive industry experience and expertise and throughout the course you will have ample opportunity to discuss issues of interest with them. Please see [here](#) for the course.

ERM & SES TECHNOLOGIES – CDEGS LEVEL 1 CERTIFICATION

The fundamental certification training is designed for participants with little or no familiarity with grounding, lightning and EMI issues. Level 1 certification means that the individual understands the key concepts related to grounding, lightning and EMI studies and is therefore in a position to evaluate the validity of such studies as a manager, supervisor or client. Please see [here](#) for the course.